

ISIN Code:TW0002883006

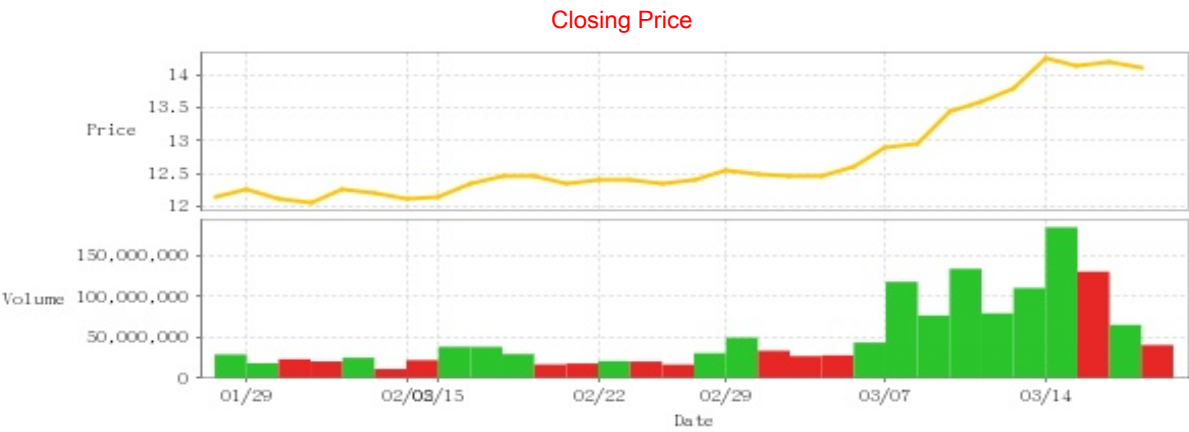
Financial and Insurance

14.1 ▼ 0.1 High 14.15 | Low 14.0 【+/-/X represent Up/Down/Not compared】

Company Information

Company Name	CHINA DEVELOPMENT FINANCIAL HOLDING CORP
Spokesman	April Pan
Website	www.cdfholding.com
Capital	NT 184,167,230,050
Main Business	China Development Financial Holding (CDFH) is a full-scaled financial institution which serves institutional and individual clients through two major subsidiaries : China Development Industrial Bank (CDIB) and Grand Cathay Securities Corporation (GCSC) . CDIB is the largest direct investment institution in Taiwan while GCSC is a leading integrated securities house. CDFH offers a full suite of financial services, across direct investment, corporate banking, investment banking, fixed income, currency and commodities (FICC) , equities and wealth management. Over the past years, CDFH has established a reputation as result-oriented and high quality service. All in all, we have proven ourselves capable of offering whatever financial services our clients may need. CDFH's capacity to cater for such sophisticated needs, places it on the surest possible track to corporate growth.
Listing Date	2001/12/28
Industry	Financial and Insurance

Price and Trade Information



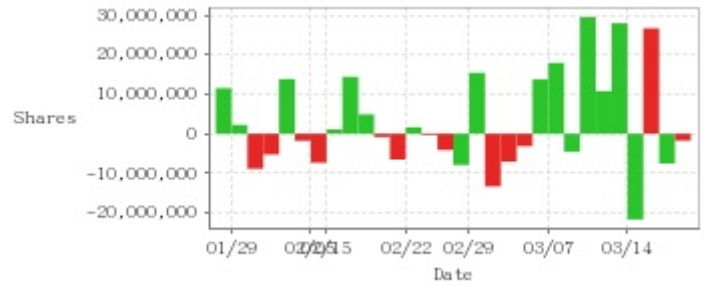
Date	Closing Price	Trade Volume	Date	Closing Price	Trade Volume	Date	Closing Price	Trade Volume
3/19	14.1	40,787,115	3/5	12.45	28,178,546	2/19	12.45	29,666,082
3/18	14.2	65,520,738	3/4	12.45	27,216,930	2/16	12.35	38,513,833
3/15	14.15	130,653,134	3/1	12.5	33,780,186	2/15	12.15	38,660,468
3/14	14.25	184,905,418	2/29	12.55	49,855,466	2/5	12.1	22,307,164
3/13	13.8	110,557,395	2/27	12.4	30,804,263	2/2	12.2	11,451,180
3/12	13.6	79,630,300	2/26	12.35	16,838,116	2/1	12.25	25,199,977
3/11	13.45	134,100,021	2/23	12.4	20,613,225	1/31	12.05	20,700,347
3/8	12.95	76,845,456	2/22	12.4	21,118,523	1/30	12.1	23,519,097
3/7	12.9	118,061,640	2/21	12.35	18,262,194	1/29	12.25	18,556,102
3/6	12.6	43,768,429	2/20	12.45	17,041,400	1/26	12.15	29,224,157

Historical Trading Information

Securities Investment Trust Companies



Foreign Investors

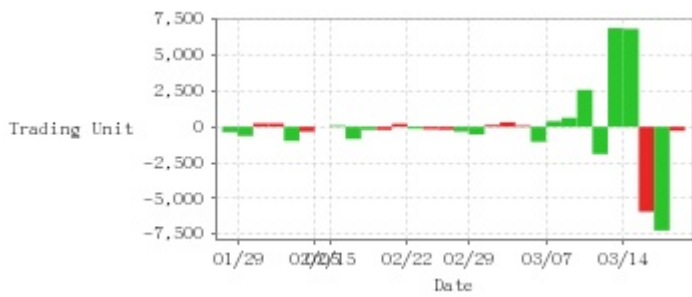


Dealers



Date	Securities Investment Trust Companies Difference(+)/(-)	Dealers Difference(+)/(-)	Foreign Investors Difference(+)/(-)	Date	Securities Investment Trust Companies Difference(+)/(-)	Dealers Difference(+)/(-)	Foreign Investors Difference(+)/(-)
3/19	-317,277	-1,953,982	-1,745,078	2/26	-83,000	+472,003	-4,106,374
3/18	-45,124	+2,586,749	-7,512,141	2/23	-8,000	+127,000	-324,925
3/15	-1,568,573	-1,082,533	+26,636,609	2/22	-11,000	+230,000	+1,654,145
3/14	-106,552	+348,719	-21,688,708	2/21	0	+1,012,569	-6,536,301
3/13	+54,000	+3,913,438	+27,932,050	2/20	-21,000	-98,999	-836,372
3/12	0	-3,286,583	+10,761,657	2/19	0	-742,861	+4,900,878
3/11	0	+7,294,388	+29,473,610	2/16	-102,000	-1,189,775	+14,386,058
3/8	-4,000	+65,000	-4,600,451	2/15	+45,515	-189,302	+1,081,939
3/7	-74,000	-801,031	+17,901,149	2/5	+31,000	+609,805	-7,332,774
3/6	-20,000	-16,000	+13,736,756	2/2	-211,000	+6,754	-1,795,497
3/5	-83,000	-693,000	-3,150,916	2/1	+23,000	-1,433,000	+13,807,384
3/4	+57,000	+326,000	-7,063,332	1/31	-5,000	-1,555,778	-5,252,888
3/1	0	-44,000	-13,324,920	1/30	-103,000	+1,669,868	-8,869,367
2/29	-42,000	-456,000	+15,394,343	1/29	+24,000	+578,000	+2,232,374
2/27	+77,000	-200,000	-7,900,332	1/26	-27,000	-422,474	+11,512,518

Purchase on Margin



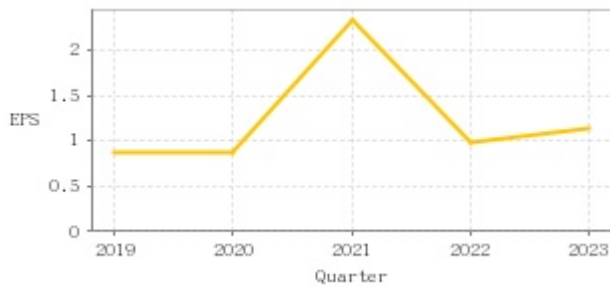
Short Sale



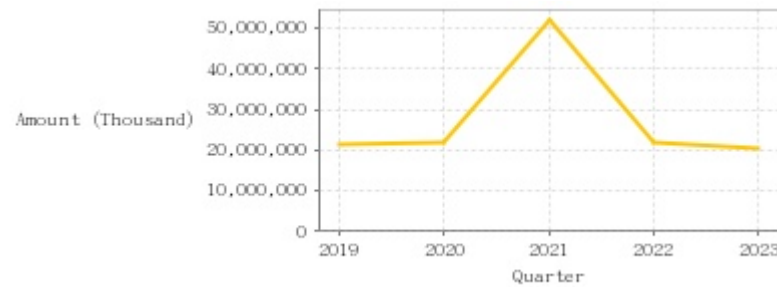
Date	Purchase on Margin	Short Sale	Date	Purchase on Margin	Short Sale	Date	Purchase on Margin	Short Sale
3/19	-285	-52	3/5	+91	+4	2/19	-211	+2
3/18	-7,243	+12	3/4	+321	+1	2/16	-853	+7
3/15	-5,933	+32	3/1	+127	-55	2/15	+86	+1
3/14	+6,844	+48	2/29	-534	+56	2/5	-3	-10
3/13	+6,891	+87	2/27	-333	0	2/2	-338	-13
3/12	-1,903	+10	2/26	-206	-8	2/1	-989	+5
3/11	+2,583	+83	2/23	-178	0	1/31	+236	+3
3/8	+630	-41	2/22	-138	0	1/30	+239	+23
3/7	+393	+49	2/21	+212	+1	1/29	-639	-1
3/6	-1,047	-4	2/20	-218	+10	1/26	-367	+11

Company Financials

EPS

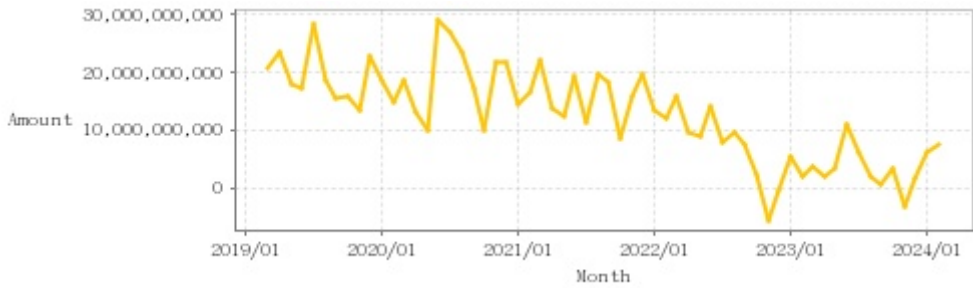


Income from continuing operations before tax



Quarter	Jan-Mar		Jan-Jun		Jan-Sep		Jan-Dec	
	EPS	Income from continuing operations before tax (Thousand)	EPS	Income from continuing operations before tax (Thousand)	EPS	Income from continuing operations before tax (Thousand)	EPS	Income from continuing operations before tax (Thousand)
2023	0.21	3,346,073	0.61	10,539,707	1.05	20,274,731	1.13	20,576,882
2022	0.58	11,604,888	0.81	18,498,642	1.21	27,111,556	0.98	21,940,865
2021	0.66	16,496,540	1.14	26,691,816	2.05	45,967,098	2.34	52,199,699
2020	-0.03	2,532,584	0.21	9,279,759	0.60	19,360,929	0.87	21,948,393
2019	0.25	5,468,984	0.54	12,646,518	0.73	19,742,019	0.88	21,565,807

Monthly Revenue



Monthly	Monthly Revenue	Monthly	Monthly Revenue	Monthly	Monthly Revenue	Monthly	Monthly Revenue	Monthly	Monthly Revenue
2024/02	7,512,741,000	2023/02	2,284,051,000	2022/02	12,208,930,000	2021/02	16,601,834,000	2020/02	14,990,134,000
2024/01	6,198,132,000	2023/01	5,656,286,000	2022/01	13,719,631,000	2021/01	14,532,675,000	2020/01	18,573,953,000
2023/12	1,647,167,000	2022/12	-130,608,000	2021/12	19,697,004,000	2020/12	22,016,902,000	2019/12	22,797,962,000
2023/11	-3,127,285,000	2022/11	-5,620,305,000	2021/11	16,039,129,000	2020/11	21,819,694,000	2019/11	13,454,986,000
2023/10	3,413,694,000	2022/10	2,392,523,000	2021/10	8,725,698,000	2020/10	10,073,827,000	2019/10	15,933,047,000
2023/09	751,090,000	2022/09	7,616,477,000	2021/09	18,495,805,000	2020/09	17,275,915,000	2019/09	15,462,883,000
2023/08	2,124,677,000	2022/08	9,848,079,000	2021/08	19,663,864,000	2020/08	23,615,307,000	2019/08	18,739,443,000
2023/07	6,350,571,000	2022/07	7,869,616,000	2021/07	11,303,772,000	2020/07	27,131,383,000	2019/07	28,277,557,000
2023/06	11,090,260,000	2022/06	14,175,966,000	2021/06	19,564,377,000	2020/06	29,277,536,000	2019/06	17,449,088,000
2023/05	3,607,450,000	2022/05	8,956,162,000	2021/05	12,467,455,000	2020/05	10,240,777,000	2019/05	17,928,293,000
2023/04	2,300,381,000	2022/04	9,624,164,000	2021/04	13,750,281,000	2020/04	13,113,711,000	2019/04	23,529,250,000
2023/03	3,976,539,000	2022/03	15,874,987,000	2021/03	22,192,000,000	2020/03	18,867,669,000	2019/03	20,890,073,000

PE ratio



Date	PE ratio	Date	PE ratio	Date	PE ratio
3/19	13.69	3/5	16.82	2/19	16.82
3/18	13.79	3/4	16.82	2/16	16.69
3/15	13.74	3/1	16.89	2/15	16.42
3/14	13.84	2/29	16.96	2/5	16.35
3/13	13.40	2/27	16.76	2/2	16.49
3/12	13.20	2/26	16.69	2/1	16.55
3/11	18.18	2/23	16.76	1/31	16.28
3/8	17.50	2/22	16.76	1/30	16.35
3/7	17.43	2/21	16.69	1/29	16.55
3/6	17.03	2/20	16.82	1/26	16.42

Announcements

(Please refer to [mops](#) for the most updated information)

Subject	Date
▶CDF, on behalf of KGI Asia Limited, announced the Board’s resolution for dividend distribution.	2024/03/19 16:34:23
▶CDF, on behalf of KGI Limited, announced the Board’s resolution for dividend distribution.	2024/03/19 16:34:40
▶CDF, on behalf of KGI International Holdings Limited, announced the Board’s resolution for dividend distribution.	2024/03/19 16:34:54
▶CDF, on behalf of KG Investments Holdings Limited, announced the Board’s resolution for dividend distribution.	2024/03/19 16:35:10
▶CDF, on behalf of PT KGI Sekuritas Indonesia, announced the major resolutions adopted at the Shareholders’ Meeting	2024/03/19 16:35:26

Corporate Action

Year	Shareholders' meeting date	Period	Cash dividends	Stock dividends
2022	2023/06/17	2022	0.00000	0.00000
2021	2022/06/17	2021	1.00000	0.00000
2020	2021/06/11	2020	0.55000	0.00000
2019	2020/06/12	2019	0.60000	0.00000