

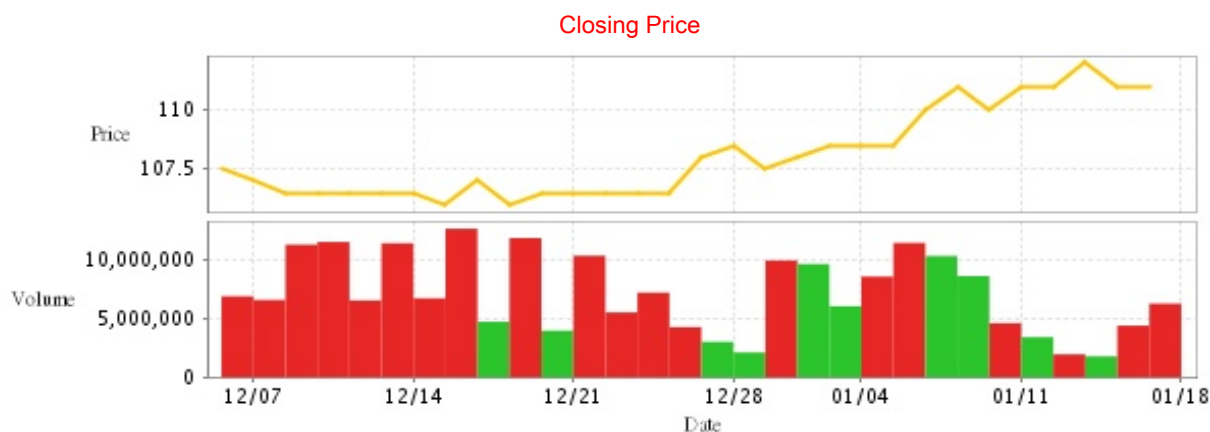
Communications and Internet

111.0 0.0 High 111.5 | Low 110.5

## Company Information

<b>Company Name</b>	TAIWAN MOBILE CO. LTD.
<b>Spokesman</b>	Rosie Yu
<b>Website</b>	www.taiwanmobile.com
<b>Capital</b>	NT 34,208,328,270
<b>Main Business</b>	Mobile phone communication services. Taiwan Mobile will continue to focus on creating the best mobile experience and lifestyle for our customers, seeking to differentiate our products, services, marketing and distribution from the competition. The company will also explore any growth-contributing strategy and investment opportunity to expand its telecommunications footprint.
<b>Listing Date</b>	2002/08/26
<b>Industry</b>	Communications and Internet

## Price and Trade Information



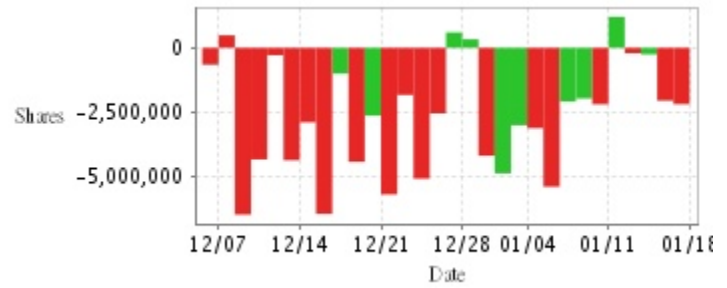
Date	Closing Price	Trade Volume	Date	Closing Price	Trade Volume	Date	Closing Price	Trade Volume
1/17	111.0	6,256,241	1/3	108.5	6,043,021	12/19	106.0	11,808,669
1/16	111.0	4,388,631	1/2	108.0	9,607,638	12/18	107.0	4,717,345
1/15	112.0	1,789,105	12/29	107.5	9,914,906	12/15	106.0	12,597,921
1/12	111.0	1,958,572	12/28	108.5	2,115,635	12/14	106.5	6,710,172
1/11	111.0	3,413,041	12/27	108.0	3,019,105	12/13	106.5	11,365,810
1/10	110.0	4,597,981	12/26	106.5	4,267,000	12/12	106.5	6,526,961
1/9	111.0	8,589,441	12/25	106.5	7,182,529	12/11	106.5	11,475,730
1/8	110.0	10,288,775	12/22	106.5	5,512,352	12/8	106.5	11,248,960
1/5	108.5	11,394,706	12/21	106.5	10,313,282	12/7	107.0	6,562,778
1/4	108.5	8,543,889	12/20	106.5	3,968,107	12/6	107.5	6,877,353

## Historical Trading Information

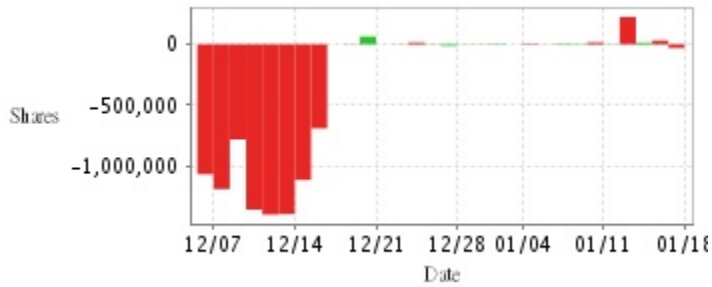
### Securities Investment Trust Companies



### Foreign Investors



### Dealers



Date	Securities Investment Trust Companies Difference(+)/(-)	Dealers Difference(+)/(-)	Foreign Investors Difference(+)/(-)	Date	Securities Investment Trust Companies Difference(+)/(-)	Dealers Difference(+)/(-)	Foreign Investors Difference(+)/(-)
1/17	+46,000	-30,000	-2,189,045	12/26	+5,865	-2,000	-2,547,000
1/16	-8,000	+31,000	-2,050,974	12/25	0	+15,000	-5,086,000
1/15	0	+14,000	-252,000	12/22	0	+2,000	-1,830,000
1/12	-1,000	+225,000	-209,500	12/21	0	0	-5,697,389
1/11	0	+3,000	+1,202,438	12/20	0	+64,000	-2,636,631
1/10	+159,000	+16,000	-2,193,568	12/19	0	-2,000	-4,430,604
1/9	0	-4,000	-1,968,684	12/18	+415,000	0	-1,002,000
1/8	0	-6,000	-2,087,120	12/15	+296,000	-689,000	-6,453,641
1/5	-109,000	-1,000	-5,397,987	12/14	+283,000	-1,112,000	-2,895,199
1/4	-250,000	-6,000	-3,122,354	12/13	+130,000	-1,392,000	-4,370,682
1/3	-200,000	0	-3,008,462	12/12	+155,000	-1,396,000	-286,200
1/2	0	-5,000	-4,879,432	12/11	+23,000	-1,355,000	-4,336,000
12/29	-14,000	+2,000	-4,195,337	12/8	-440,000	-780,000	-6,481,400
12/28	+9,000	-2,000	+331,000	12/7	0	-1,187,000	+486,000
12/27	+10,000	-12,000	+599,000	12/6	+5,000	-1,065,000	-654,400

### Purchase on Margin



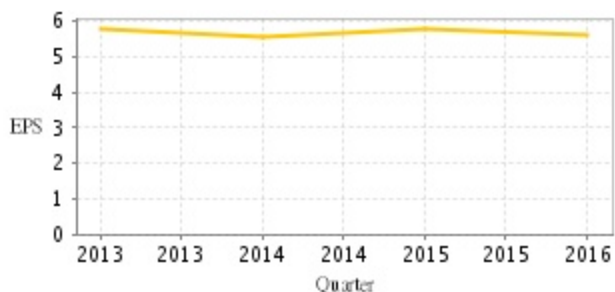
### Short Sale



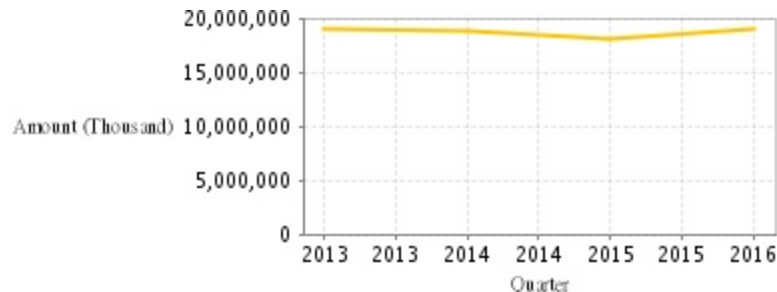
Date	Purchase on Margin	Short Sale	Date	Purchase on Margin	Short Sale	Date	Purchase on Margin	Short Sale
1/17	-3	0	1/3	-35	0	12/19	+14	0
1/16	-92	0	1/2	-22	0	12/18	-128	+1
1/15	+4	-1	12/29	+34	0	12/15	+285	0
1/12	-11	0	12/28	-23	-1	12/14	-5	0
1/11	-7	0	12/27	-57	+1	12/13	+57	0
1/10	-1	+1	12/26	-1	0	12/12	+2	0
1/9	-6	0	12/25	+4	0	12/11	-47	0
1/8	-106	-3	12/22	-31	0	12/8	+61	0
1/5	+203	+1	12/21	+1	0	12/7	-2	0
1/4	+97	0	12/20	0	0	12/6	+50	0

## Company Financials

### EPS



### Income from continuing operations before tax



Quarter	Jan-Mar		Jan-Jun		Jan-Sep		Jan-Dec	
	EPS	Income from continuing operations before tax (Thousand)	EPS	Income from continuing operations before tax (Thousand)	EPS	Income from continuing operations before tax (Thousand)	EPS	Income from continuing operations before tax (Thousand)
2017	1.46	4,903,185	2.86	9,720,274	4.32	14,449,119	-	-
2016	1.39	4,769,378	2.90	9,886,215	4.36	14,851,557	5.63	19,191,472
2015	1.40	4,146,346	2.85	8,977,028	4.38	14,027,510	5.76	18,165,950
2014	1.52	5,079,065	3.06	10,273,681	4.45	14,813,480	5.56	18,865,077
2013	1.42	4,703,065	2.89	9,547,903	4.47	14,736,179	5.79	19,118,541

Monthly Revenue



Monthly	Monthly Revenue	Monthly	Monthly Revenue	Monthly	Monthly Revenue	Monthly	Monthly Revenue	Monthly	Monthly Revenue
2017/12	10,612,507,000	2016/12	10,369,095,000	2015/12	9,933,930,000	2014/12	9,994,692,000	2013/12	9,855,916,000
2017/11	11,339,032,000	2016/11	10,227,894,000	2015/11	10,053,818,000	2014/11	10,179,109,000	2013/11	9,330,387,000
2017/10	9,811,909,000	2016/10	9,961,061,000	2015/10	10,546,133,000	2014/10	10,019,750,000	2013/10	9,368,178,000
2017/09	9,788,812,000	2016/09	9,499,141,000	2015/09	8,947,731,000	2014/09	9,475,358,000	2013/09	8,829,633,000
2017/08	9,557,810,000	2016/08	9,564,220,000	2015/08	9,297,734,000	2014/08	9,111,669,000	2013/08	9,295,409,000
2017/07	9,416,503,000	2016/07	9,385,161,000	2015/07	9,320,398,000	2014/07	9,180,588,000	2013/07	9,136,468,000
2017/06	9,368,584,000	2016/06	9,290,760,000	2015/06	9,291,582,000	2014/06	8,902,294,000	2013/06	8,854,439,000
2017/05	9,411,535,000	2016/05	9,456,801,000	2015/05	9,567,163,000	2014/05	9,000,175,000	2013/05	9,257,869,000
2017/04	9,023,767,000	2016/04	9,694,468,000	2015/04	9,468,146,000	2014/04	9,033,770,000	2013/04	8,658,001,000
2017/03	9,549,444,000	2016/03	9,568,993,000	2015/03	9,671,700,000	2014/03	8,836,913,000	2013/03	8,696,629,000
2017/02	9,346,722,000	2016/02	9,431,313,000	2015/02	9,465,650,000	2014/02	8,904,276,000	2013/02	8,532,905,000
2017/01	9,944,482,000	2016/01	10,198,591,000	2015/01	10,580,220,000	2014/01	9,985,285,000	2013/01	9,327,533,000

PE ratio



Date	PE ratio	Date	PE ratio	Date	PE ratio
1/17	19.89	1/3	19.44	12/19	19.00
1/16	19.89	1/2	19.35	12/18	19.18
1/15	20.07	12/29	19.27	12/15	19.00
1/12	19.89	12/28	19.44	12/14	19.09
1/11	19.89	12/27	19.35	12/13	19.09
1/10	19.71	12/26	19.09	12/12	19.09
1/9	19.89	12/25	19.09	12/11	19.09
1/8	19.71	12/22	19.09	12/8	19.09
1/5	19.44	12/21	19.09	12/7	19.18
1/4	19.44	12/20	19.09	12/6	19.27

## Announcements

(Please refer to [mops](#) for the most updated information)

Subject	Date
▶ Information regarding the appeal of the C1 and C4 spectrum block lawsuit between FET and TWM	2018/01/17 13:37:03
▶ Information regarding the provisional injunction filed by FET claiming that the Company shall not use the C1 spectrum block	2018/01/15 18:51:54
▶ Announcement of the Resignation of an Independent Director	2018/01/12 17:04:34
▶ Announcement of the Resignation of a member of the Audit Committee / Compensation Committee	2018/01/12 17:04:46
▶ Announcement of TWM December 2017 results	2018/01/10 19:13:25

## Corporate Action

Year	Shareholders' meeting date	Period	Cash dividends	Stock dividends
2016	2017/06/14	1	5.20800	0.00000
2015	2016/06/15	1	5.60000	0.00000
2014	2015/06/10	1	5.60000	0.00000
2013	2014/06/12	1	5.60000	0.00000